

SPRING 2022-FALL 2022
OMEGA AND ALPHA BETA SEMESTERS

ANNUAL NEWSLETTER

Official Newsletter of the Theta Tau Eta Delta Chapter



TABLE OF CONTENTS

SPRING 2022 EXECUTIVE BOARD	2
SPRING 2022 OFFICERS	3
FALL 2022 EXECUTIVE BOARD	4
FALL 2022 OFFICERS	5
CHAPTER DEMOGRAPHICS	6
INTRODUCING OMEGA CLASS	7-8
INTRODUCING ALPHA BETA CLASS	9-10
PHILANTHROPY	11
PROFESSIONALISM	12
BROTHERHOOD	13
2022 RECAP IN PICTURES	14
2022 GRADUATES	15-21

SPRING 2022 EXECUTIVE BOARD



MADDIE HUTCHINS

REGENT
SIGMA CLASS
CIVIL ENG. '22



MEGHAN PATEL

VICE REGENT
PHI CLASS
BIO ENG. '23



BRANDON SOOBITSKY

SCRIBE
CHI CLASS
ELECTRICAL ENG. '24



JAKOB BRINKMAN

TREASURER
UPSILON CLASS
CIVIL ENG. '23



ERIC PALMER

CORRESPONDING SECRETARY
PHI CLASS
MAT SCI & ENG. '23



JULIA ZHITENEVA

DIRECTOR OF RISK MANAGEMENT
SIGMA CLASS
BIO ENG. '22

SPRING 2022 OFFICERS

CHAPTER OFFICERS

RUSH	SIDD KARUNAKARAN SYDNEY NADER	CORPORATE RELATIONS	IAN HIDALGO
SERVICE	MARY MAE ROBINSON RYAN HALLI LAUREN GABRANSKI	GRAPHIC DESIGN	COLIN MCEWAN MARY KOLBE
PD*	AJ STRAWDERMAN MIKE SWETZ URJO NAHID	DEI**	SIENA BUTTERS ASHLEY HAWKINS
BROTHERHOOD	JOEY MOORE EDDIE LEE GAVIN BRAMBLE	ACADEMIC	LIAM ROY
FUNDRAISING	ZOSIA NICHOLSON ALPHA BAH	OUTER GUARD	KENNY CHEUNG
HISTORIAN	ANNA MEADE	INNER GUARD	JOHN FITZSIMMONS
PUBLIC RELATIONS	GRACE POWERS DINA ELOSEILY	CAMPUS AMBASSADOR	KATE TANCHANCO JENNIFER OPARA
		MEDIATION COMMITTEE	ADVAITH BANTVAL IAN HIDALGO JOEY MOORE ANNA MEADE MADDIE SCHATTENFIELD JORDYN COBBS

PLEDGE TEAM

PLEDGE MARSHALL	JOE CULVER
PLEDGE INSTRUCTORS	ADVAITH BANTVAL LUCAS FRANKLE ELEANOR GROSVENOR

*PD: PROFESSIONAL DEVELOPMENT
**DEI: DIVERSITY, EQUITY, AND INCLUSION

FALL 2022 EXECUTIVE BOARD



LUCAS FRANKLE

REGENT
CHI CLASS
BIO ENG. '24



AJ STRAWDERMAN

VICE REGENT
CHI CLASS
MECHANICAL ENG. '24



MARY MAE ROBINSON

SCRIBE
UPSILON
PHYSIOLOGY &
NEUROBIOLOGY '23



JAKOB BRINKMAN

TREASURER
UPSILON CLASS
CIVIL ENG. '23



ERIC PALMER

CORRESPONDING SECRETARY
PHI CLASS
MAT SCI & ENG. '23



LAUREN GABRANSKI

DIRECTOR OF RISK MANAGEMENT
PSI CLASS
BIO ENG. '24

FALL 2022 OFFICERS

CHAPTER OFFICERS

RUSH	ALPHA BAH JONATHAN HENG	CORPORATE RELATIONS	MADDIE SCHATTENFIELD
SERVICE	CHIMAOBI AKU CASSIDY SUDELL CARTER AUSTIN	GRAPHIC DESIGN	PENELOPE CHOI KAYLA LUCAS
PD*	GAVIN BRAMBLE JENNIFER OPARA JIMMY YATES	DEI**	ALLISON CHUNG MARNE MALONE
BROTHERHOOD	BILLY RUST NICO ROESLER LIAM ROY	ACADEMIC	DANIEL LAMB
FUNDRAISING	JENNIFER TARTAGLIA ILANIT SEDEK	OUTER GUARD	JOSHUA MACMILLAN
HISTORIAN	KENNY CHEUNG	INNER GUARD	MILES SCHIFF STEIN
PUBLIC RELATIONS	KATE TANCHANCO JOHN FITZSIMMONS	CAMPUS AMBASSADOR	HAILU DANIEL GABI D'ORTO
		MEDIATION COMMITTEE	CHELSEA ROTH LIAM ROY URJO NAHID KENNY CHEUNG MARY KOLBE ALPHA BAH

PLEDGE TEAM

PLEDGE MARSHALL	SIDDHARTH KARUNAKARAN
PLEDGE INSTRUCTORS	MEGHAN PATEL JULIAN FAYE BRANDON SOOBITSKY

*PD: PROFESSIONAL DEVELOPMENT
**DEI: DIVERSITY, EQUITY, AND INCLUSION

Fall 2022 - Spring 2022

CHAPTER DEMOGRAPHICS

*Stats from Spring 2022
(excludes Omega Class)

3.52

Average GPA

90.7%

Have at least one Summer or Full-Time Role

ACTIVE BROTHERS

86

ALUMNI

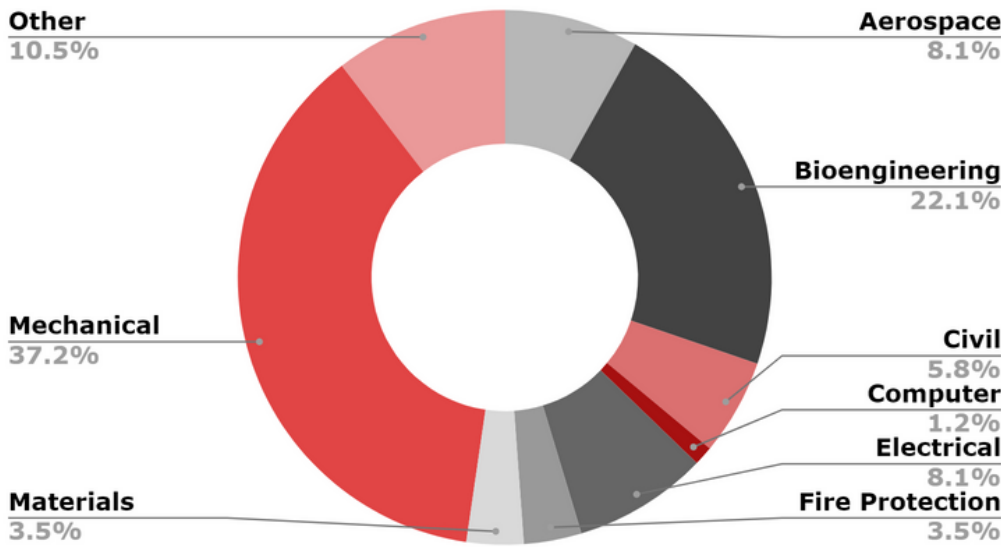
299

YEAR

2022	41
2023	25
2024	15
2025	5

MAJOR DISTRIBUTION

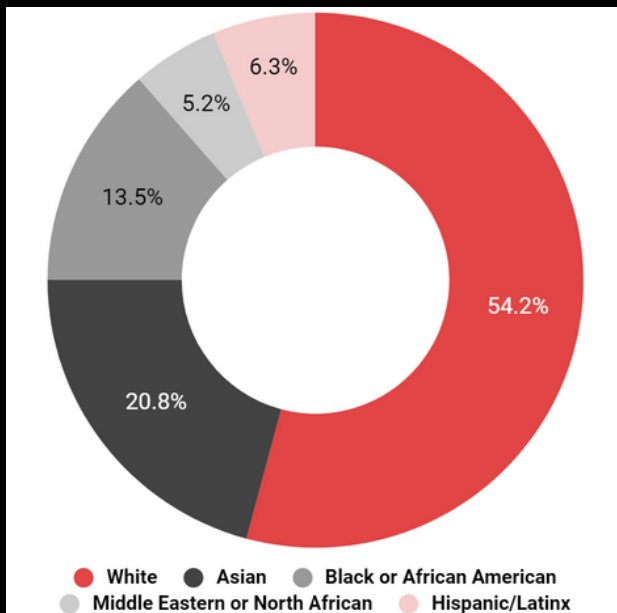
Major Breakdown



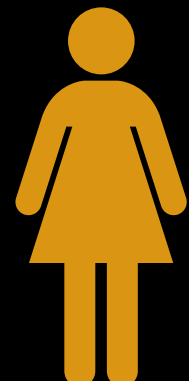
PLEDGE CLASS

PI	1
RHO	7
SIGMA	9
TAU	14
UPSILON	15
PHI	10
CHI	12
PSI	18
OMEGA	16

ETHNICITY



GENDER IDENTITY



47.67%

52.33%



CARTER AUSTIN
MECHANICAL,
INDUSTRIAL, FILM '25



PENELOPE CHOI
FIRE PROTECTION '24



ALLISON CHUNG
CHEMICAL '25



HAILU DANIEL
AEROSPACE '24

WELCOME, OMEGA CLASS!



GABI D'ORTO
CHEMICAL '25



JONATHAN HENG
CIVIL '23



NILA KARTHIKESAN
COMPUTER SCIENCE '24



DANIEL LAMB
COMPUTER '25



MARNE MALONE
CIVIL '24



NICO ROESLER
MECHANICAL '24



BILLY RUST
MECHANICAL '24



MILES SCHIFF STEIN
MECHANICAL '24

WELCOME, OMEGA CLASS!



ILANIT SEDEK
CIVIL '25



CASSIDY SUDELL
CHEMICAL '25



JENNIFER TARTAGLIA
MECHANICAL '25



JIMMY YATES
CIVIL '25



SHAURYA AGARWAL
ELECTRICAL '25



HARJAS ANEJA
MECHANICAL '26



ANH CAO
MECHANICAL '24



NOAH CAUCHI
COMPUTER '26



NADINE COMBATIR
COMPUTER '25

WELCOME, ALPHA BETA CLASS!



SNEHA D'ANDREA
BIOENGINEERING '23



AJ GECKLE
ELECTRICAL '24



MICHAEL GONZALES
COMPUTER '24



ANURAAG KARUNAKARAN
COMPUTER '26



GRACIE KNAPP
MECHANICAL '25



ASHWINI MARIAPPAN
CIVIL '25



YOBANY MATOS JR.
MECHANICAL '24



SEAN MCCURRY
AEROSPACE '25



OKSANA MIKHAYLENKO
AEROSPACE '25



CAROLINE ROSENBERRY
BIOENGINEERING '26

WELCOME, ALPHA BETA CLASS!



NISHAN SANDHU
MECHANICAL '26



DAHLIA SHAFIQ
MECHANICAL '26



MIKAELA TROUNG
BIOENGINEERING '25



ANDREW UNG
MECHANICAL '25

PHILANTHROPY

EVENTS

COLLEGE PARK FOOD BANK
EVENT

CAMPUS CLEANUPS

HABITAT FOR HUMANITY

BLOOD DRIVE

NAMI 5K AND
FUNDRAISERS



PROFESSIONALISM

EVENTS

SPRING + FALL ALUMNI DINNERS

ACCENTURE INFO SESSION

COOKIES AND COOKIE CUTTERS

FINANCIAL LITERACY

HENSEL PHELPS INFO SESSION

EATON AEROSPACE INFO SESSION

CFR ENGINEERING INFO SESSION

PLEDGE PD BOOTCAMP



How to start investing?

- Savings (CD)
- Roth IRA
- Traditional IRA
- 401k Plan
- 403b Plan

U.S. Stock Ownership

52% of Americans invest



BROTHERHOOD

EVENTS

HOMECOMING TAILGATE

ST. PATRICK'S DAY

FORMAL AT THE HALL

FAMILY OLYMPICS

BETHANY BEACH AWAY
WEEKEND

TROPICAL DAY W/ PHI CHI

BUTT LUNCHEES

IM BASKETBALL CHAMPS

FIELD DAYS

POTLUCK GAME NIGHT

80'S NIGHT





College Collage College Collage



CLASS OF 2022



2022



Advait Bantval

SIGMA CLASS
MECHANICAL



ELLY BAKER

RHO CLASS
KINESIOLOGY + DANCE



TARA BASIR

PI CLASS
BIOENGINEERING



JORDYN COBBS

TAU CLASS
FIRE PROTECTION



JESS CONWAY

UPSILON CLASS
BIOENGINEERING



JOE CULVER

TAU CLASS
MECHANICAL



ALEX DELUCCA

TAU CLASS
FIRE PROTECTION

2022



DINA ELOSEILY
SIGMA CLASS
BIOENGINEERING



ELEANOR GROSVENOR
TAU CLASS
MATERIAL SCIENCE



YUNSEO HAN
UPSILON CLASS
ELECTRICAL



ASHLEY HAWKINS
RHO CLASS
BIOENGINEERING



MORGAN HOFFMAN
SIGMA CLASS
MECHANICAL



IAN HIDALGO
TAU CLASS
BIOENGINEERING



GRIFFIN HOLT
RHO CLASS
MECHANICAL

2022



LAUREN HOORENS
TAU CLASS
BIOENGINEERING



MADDIE HUTCHINS
SIGMA CLASS
CIVIL



LEO JAGID
SIGMA CLASS
MECHANICAL + CS



NATHAN KAPLAN
SIGMA CLASS
ELECTRICAL



**SIDDHARTH
KARUNAKARAN**
PHI CLASS
MECHANICAL + CS



DALIA KASSAS
SIGMA CLASS
BIOENGINEERING



DEBBIE KAUFMAN
UPSILON CLASS
CIVIL

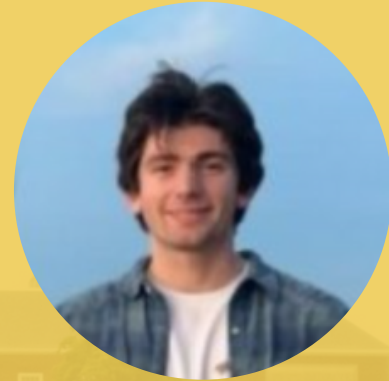
2022



TALI KIRSHENBOIM

RHO CLASS

LANDSCAPE ARCHITECTURE + DIGITAL DESIGN



JIMMY LATOFF

UPSILON CLASS

BIOENGINEERING



EDDIE LEE

SIGMA CLASS

MECHANICAL



JACK LIANG

RHO CLASS

MECHANICAL



JOSHUA LYONS

SIGMA CLASS

FIRE PROTECTION



COLIN MCEWAN

UPSILON CLASS

MECHANICAL

2022



ANNA MEADE
RHO CLASS
MECHANICAL



ANNA MOISEEVA
TAU CLASS
MECHANICAL



JOEY MOORE
TAU CLASS
MECHANICAL + CS



JOHN NGUYEN
PHI CLASS
MECHANICAL



GRACE POWERS
TAU CLASS
BIOENGINEERING



MICHAEL QIAN
UPSILON CLASS
CS



JARED SEMLER
TAU CLASS
MECHANICAL

2022



COLIN SCOTT
UPSILON CLASS
MECHANICAL



RITHWIK SHIVRAM
UPSILON CLASS
COMPUTER



NICHOLAS TESTA
RHO CLASS
AEROSPACE



ANANYA UNIYAL
UPSILON CLASS
MECHANICAL + CS



CASSIE YATES
UPSILON CLASS
AEROSPACE



JULIA ZHITNEVA
SIGMA CLASS
BIOENGINEERING